

# Actividades de Orzo Sanchez

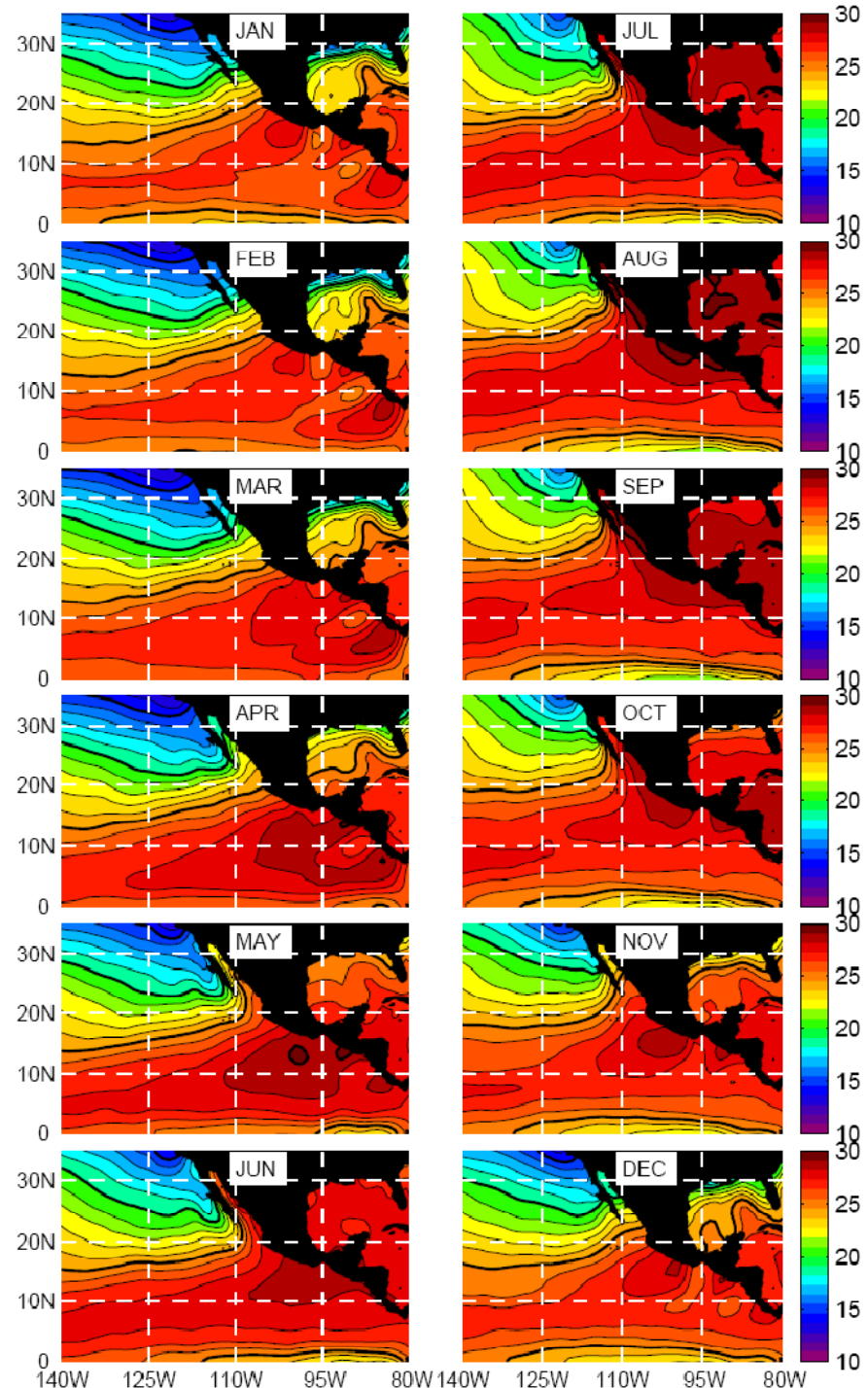
CICATA-IPN

# *Monthly Sea Surface Temperature*

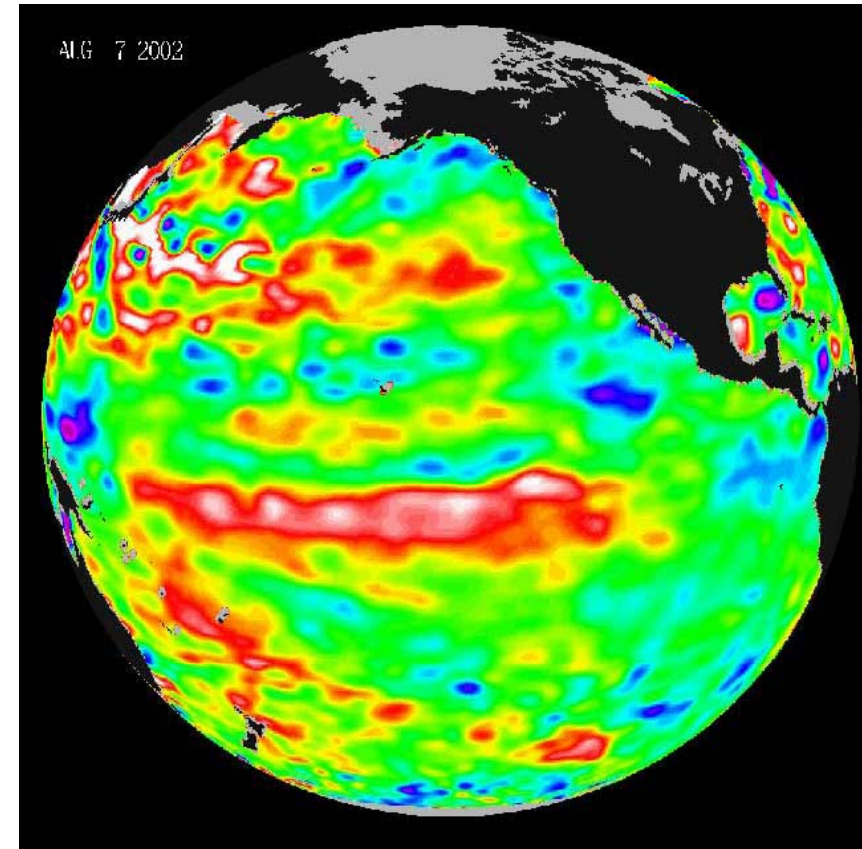
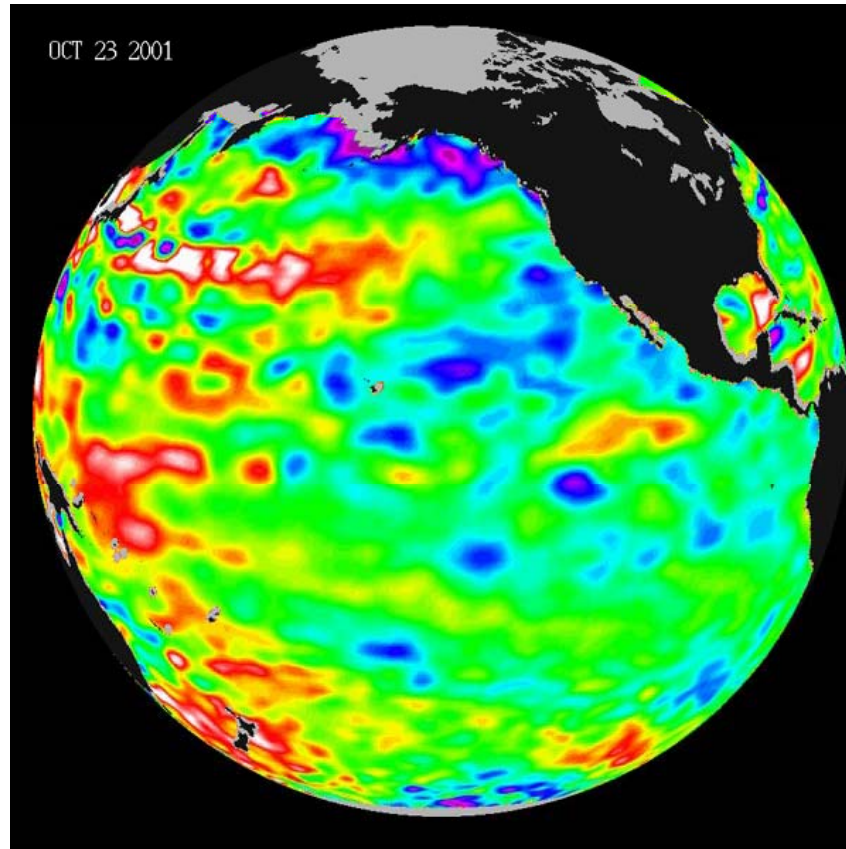
**SST important but also depth of the oceanic mixed layer**

**Ocean heat content available for cyclone intensification**

(Romero-Centeno, 2007)

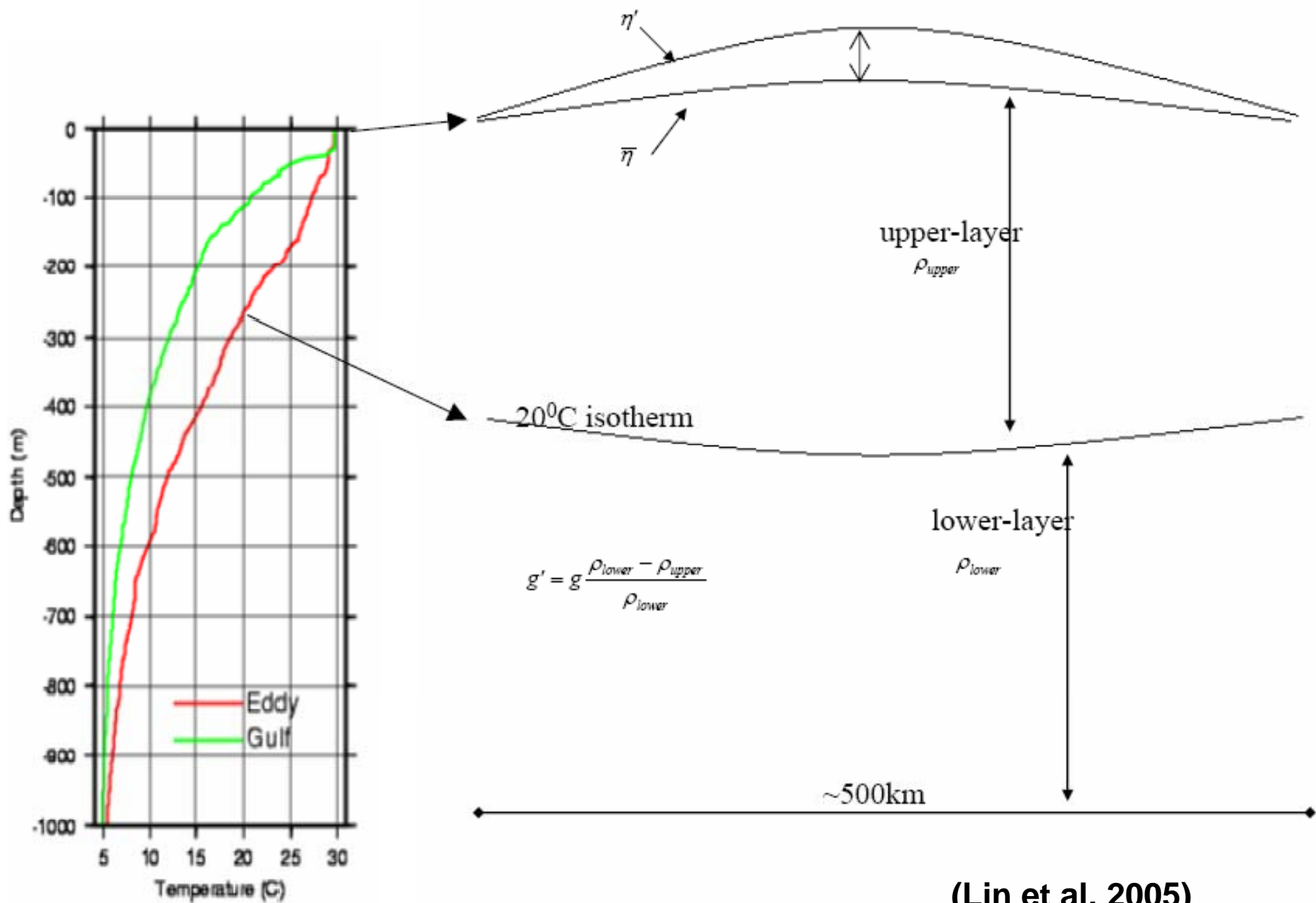


# Altimetry: TOPEX/Poseidon & JASON



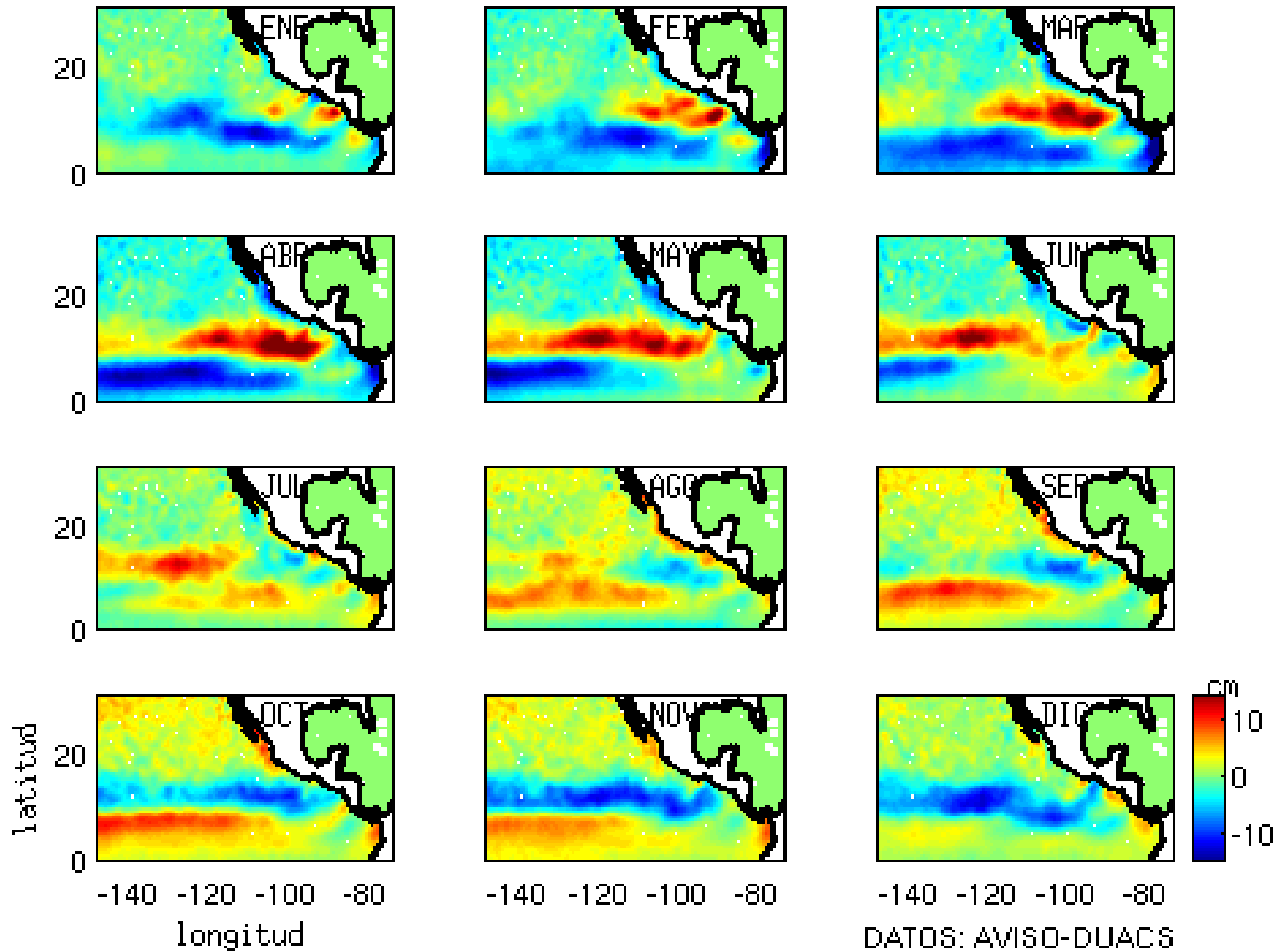
- Altimetry observations can be used to estimate SSH and dynamic height (analogous to the height of a pressure level).
- Pictures (from <http://topex-www.jpl.nasa.gov/elnino/index.html>) show an neutral winter (left) follow in August by a growing El Nino (right).

(Courtesy J. Zavala-Hidalgo)



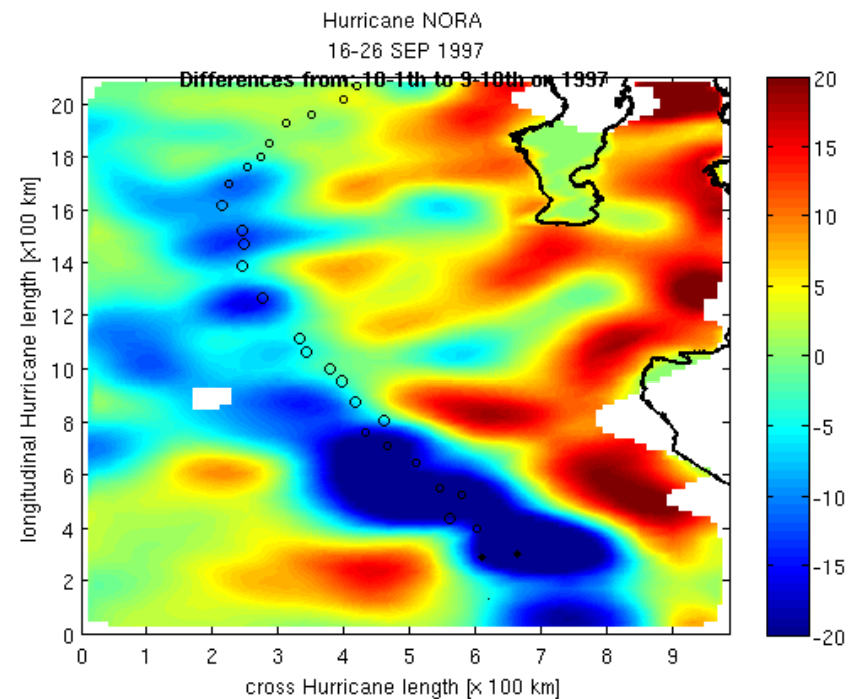
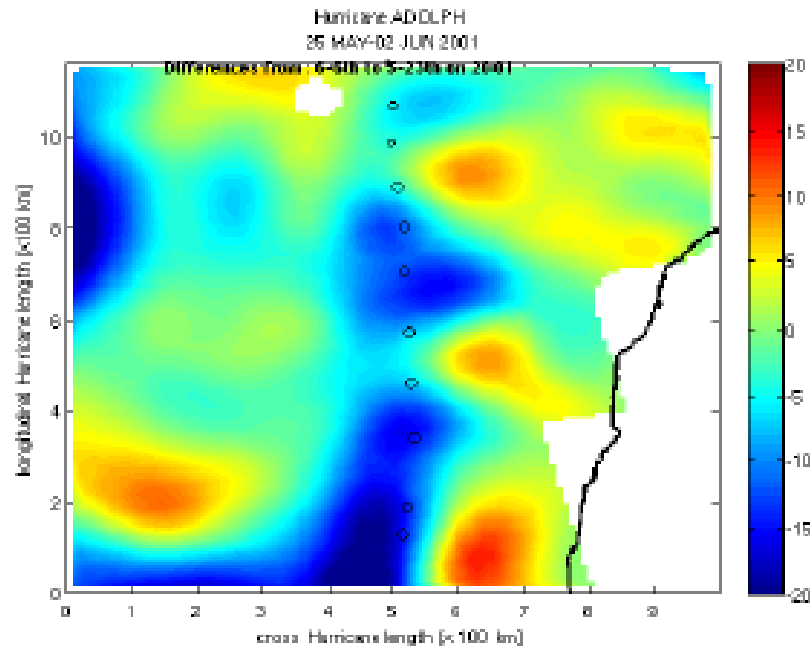
(Lin et al, 2005)

CAMPOS MENSUALES MEDIOS DE MSLA EN EL PERIODO 1993-2006



(O. Sanchez-Montante)

# SSHA “wake” of hurricanes in EPAC



(O. Sanchez-Montante)

## **Current and future work on this topic in collaboration with Orzo Sanchez**

- **Manuscript in preparation describing the climatological conditions of SSHA anomaly in EPAC**
- **Extend the analysis of the “wake” signal to all the database (1993-2006), look for correlations with SSTA**



# Hurricane John

## 28-Aug-4 Sept 2006

### Category 4

